

Specification		Model		Remark
Item	Details	MT180	MT280	
● Capability	Spindle Bore	66mm	76mm	
	Max Work Diameter	180mm	280mm	
	Spindle Travel	450mm	450mm	
● Construction	No of Spindle	2 ea (Main/Sub moves to each other)		
	Turret Slide	2 ea (Main/Sub with Y1, Y2 Axes)		
	Control Axes	"Z1, X1, Y1, C1, A1, A2/Z2, X2, Y2, C2, A3, A4"		
● Turret	No. of Turret	2 ea (12 station, 16 OPT)	2 ea(12 station, 16 OPT)	
	No of Tools	Power : more than 12	Power : more than 12	
		Fixed : more than 12	Fixed : more than 12	
	16 station Turret	Optional	Optional	
	Power of rotation tool	2,2KW(3,7KW OPT)	2,2KW(3,7KW OPT)	
	RPM	4,000	4,000	
	OD tool shank	25X25mm	25X25mm	
● Special tool	Another control axis	Install on turret	Install on turret	
● Main Spindle	Index angle	0,001 C-axis	0,001 C-axis	
	RPM	6,000	5,000	
	Motor power	5,5KW (7,5KW OPT)	7,5KW (11KW OPT)	
● Sub Spindle	Index angle	0,001 C-axis	0,001 C-axis	
	RPM	6,000	6,000	
	Motor power	5,5KW (7,5KW OPT)	5,5KW (7,5KW OPT)	

※ Specification can be for performance improvement

Standard Accessories

1. Main Spindle Chuck sleeve
2. Sub Spindle Chuck sleeve
3. Spindle C-axis control (Main & Sub)
4. Spindle clamp unit (Main & Sub)
5. 12 station turret for main
(12 power tools applicable)
6. 12 station turret for sub
(12 power tools applicable)
7. Hydraulic unit
8. Pneumatic Unit
9. Automatic centralized lubrication unit
10. Broken cut off tool detector (soft type)
11. Work light
12. Parts ejector for Sub
13. Parts catcher for sub
14. Parts conveyor for sub
15. Bar feeder interface

Optional Accessories

1. 16 station turret
2. Power tools on turret
3. Special tooling on turret
4. Coolant flow detector
5. Bar feeder
6. M-code oil blow
7. High pressure coolant system
8. Chip conveyor
9. Chip box
10. Auto fire extinguisher
11. Mandrel chuck for ID chucking
12. Power chuck for forged parts
13. Power chuck for ID chucking
14. Auto loader for forged parts
15. Stocker for forged parts
16. Additional Tool Slide (3 path)

CNC SWISS TURN

MT180 / MT280

2 SPINDLE / 2 TURRET



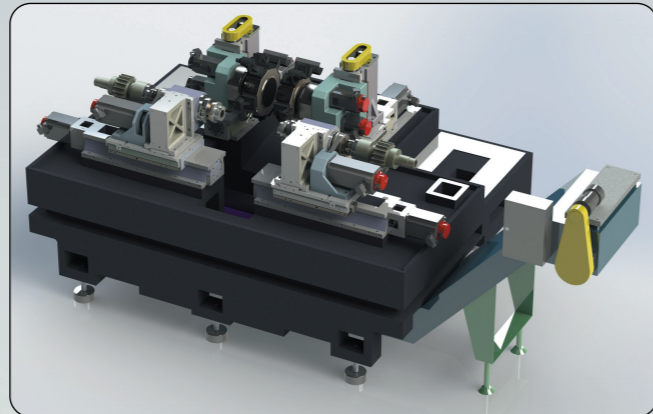
MEPLETE INDUSTRY www.meplete.com

9, Seonggok-ro 146beon-gil, Danwon-gu, Ansan-si, Gyeonggi-do 425-834, Korea
T. 82-2-578-5460, 070-8680-8420 F. 82-2-578-5462 E-mail. sales@meplete.com

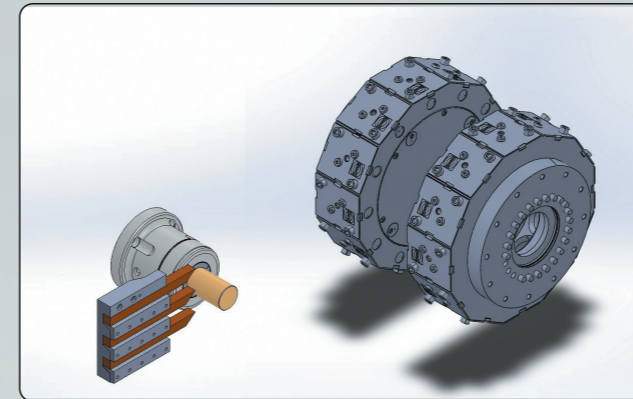
MECHANICAL COMPLETE

MT180 / MT280

- 2 SPINDLE / 2 TURRET IN FACE
- 2 TURRET WITH Y1, Y2 AXIS RESPECTIVELY



3rd TOOL SLIDE (OPT)
(Simultaneous Turning for CT reduction)



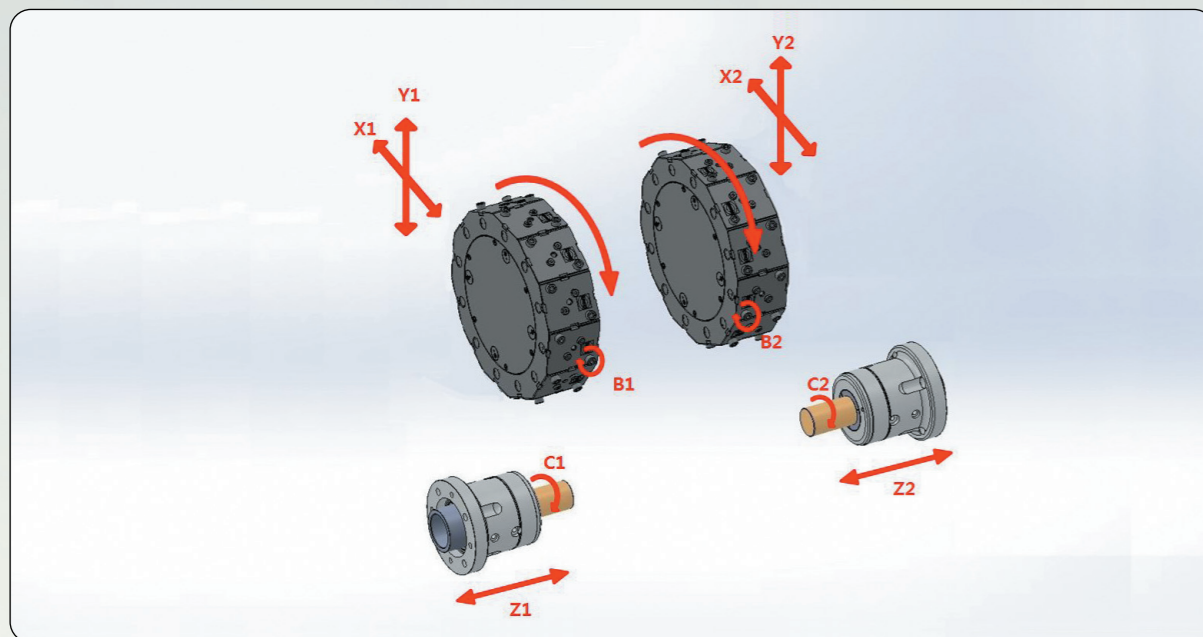
3rd TOOL SLIDE (OPT)

- OD Tool 3 ea
- or Rotation Tool 2 ea
- or Special Tool

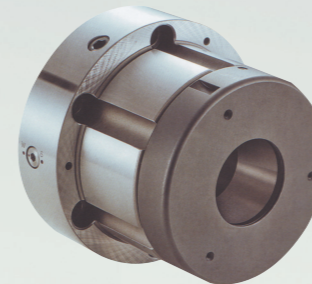
Y1, Y2 AXES on TURRET

- 12 station Power Tool
- Maximum Numbers of Tool Applicable
- Special Power Tool Applicable
- High Capable Milling Application

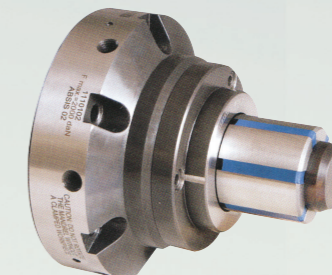
BOTH SPINDLE MOVE TOWARD TO EACH OTHER



COLLET, MANDREL, Power Chuck Aplicable on Demand



· COLLET ·



· MANDREL ·



· Power Chuck ·

CENTER APPLICATION

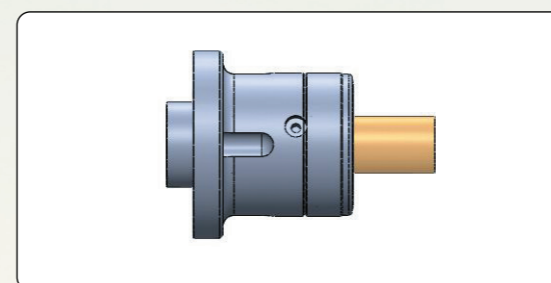
- for Long Parts Application
- High Accuracy Machining

Left Turret

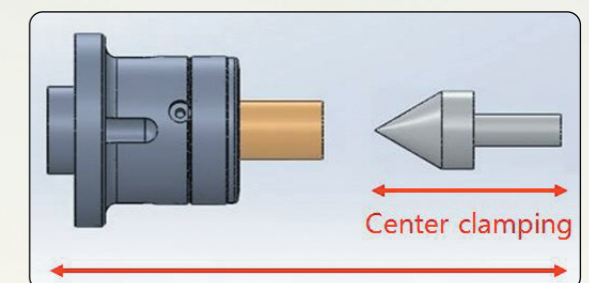
Station	12 Station (16 OPT)
Power Tool	12 position
TOOL	BMT 45/55, VDI 30/40
Tool Fixed	12 station

Right Turret

Station	12 Station (16 OPT)
Power Tool	12 position
TOOL	BMT 45/55, VDI 30/40
Tool Fixed	12 station



· Free End Machining ·



· Center Machining ·