

Specification		Unit	Model		Remark
Item	Details		MS32	MS36	
● Capability	Max Machin'g Dia	mm	32	36	W/rotary guide
	Max Stroke	mm	310	310	
● OD tools	No. of tools	ea	6	6	
	Tool shank	mm	16 x 16	16 x 16	
● ID Tools(Sleeve holder) (rear machinable)	No. of tools	ea	4	4	
	Max Drilling Capability	mm	∅ 13	∅ 13	
	Max Tapping Capability		M12	M12	
● Power Driven Tool	No. of tools		5~10 (incl. OPT)	5~10 (incl. OPT)	
	Special Tools		Modular	Modular	
	Max Drilling Capability	mm	∅ 8	∅ 8	
	Max Tapping Capability		M6	M6	
	Max Milling Capability	mm	dia 10	dia 10	
	Motor Power	KW	1.2(1.5, 1.75 OPT)	1.2(1.5, 1.75 OPT)	
	RPM	Max	5000	5000	
● Main Spindle	Index Angle		0,001 C-axis	0,001 C-axis	
	RPM	Max	7,000	7,000	
	Motor Power	Kw	5.5 / 7.5	5.5 / 7.5	
● Sub Spindle	Index Angle		0,001 C-axis	0,001 C-axis	
	RPM	Max	7,000	7,000	
	Motor Power	Kw	2.2 / 3.7	2.2 / 3.7	
● Rear working capability	Max projection length	mm	125	125	
	No. of Tools	ea	4 Rotation	4 Rotation	
	Motor Power	Kw	0.5 (0.9 OPT)	0.5 (0.9 OPT)	
	Power tool rotation	RPM	4,000	4,000	
	Special Tools		Modular	Modular	
	Max Drill'g Capability(Fixed)	mm	∅ 13	∅ 13	
	Max Drill'g Capability(Rotate)	mm	∅ 6	∅ 6	
	Max Tapp'g Capability(Fixed)		M10	M10	
	Max Tapp'g Capability(Rotate)		M5	M5	
	Y2 axis tool no. increase		OPT	OPT	
	CROSS Drill(Modular w/Y2 axis)	ea	2, 4 (OPT)	2, 4 (OPT)	
	Add CD&D tools	ea	2, 4 (OPT)	2, 4 (OPT)	

※ Specification can be for performance improvement

### Standard Accessories

1. Main Spindle Chuck sleeve
2. Sub Spindle Chuck sleeve
3. Spindle C-axis control(Main & Sub)
4. Spindle clamp unit(Main & Sub)
5. Rotary Guide Bush Unit
6. 6 station Bite Holder
7. 4 position ID tool sleeve holder
8. 5 Cross Drill(Integrated 3 tools + modular 2 tools)
9. 4 Rear side machining unit(rotational tools)
10. Pneumatic Unit
11. Automatic centralized lubrication unit
12. Broken cut off tool detector(Sensor type)
13. Work light
14. Parts conveyor
15. Sub spindle air purge
16. Sub spindle air blower
17. Rotary guide bush air purge
18. Bar feeder interface

### Optional Accessories

1. Parts ejector
2. Modular tool for power driven tool for main & sub
3. Additional 2 sleeve holder for OD, ID tool for Sub
4. Additional 4 sleeve holder for OD, ID tool for Sub(Y2 Axis)
5. Coolant flow detector
6. Long parts ejector
7. Bar feeder
8. M-code oil blow
9. High pressure coolant
10. Long parts rear side discharge
11. Chip conveyor
12. Chip box
13. Stationary guide bush
14. Auto fire extinguisher
15. Special tooling

# CNC SWISS TURN MS32 / MS36 Versatile Modular Power Tool



MELETE INDUSTRY [www.melete.com](http://www.melete.com)

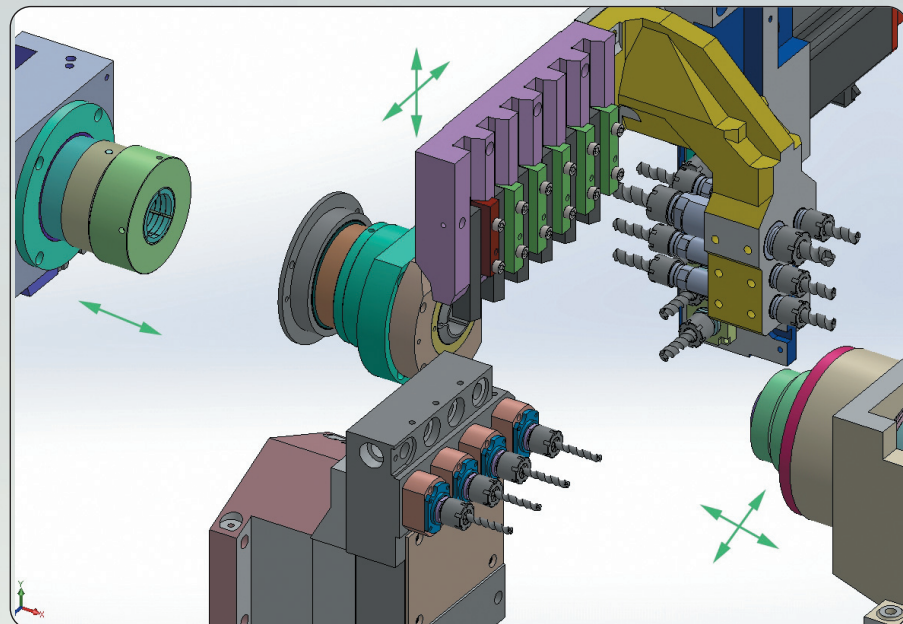
9, Seonggok-ro 146beon-gil, Danwon-gu, Ansan-si, Gyeonggi-do 425-834, Korea  
T. 82-2-578-5460, 070-8680-8420 F. 82-2-578-5462 E-mail. sales@melete.com

MECHANICAL COMPLETE



# MS32 / MS36

- Various Power Tooling with Modular Tools
- Versatile Rear(Back) Side Machining
- Y2 Axes + increase of Tools + Cross Drill
- High end complex tooling machine (OPT)
- Rear & Modular Tooling

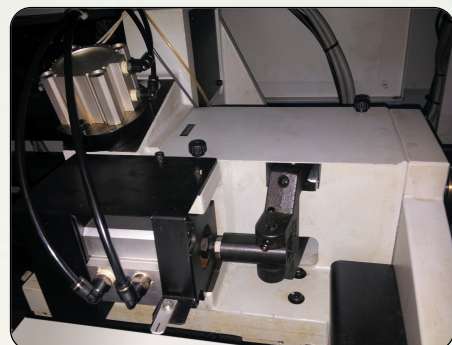


## Front machining

OD Tool		6 ea
ID Tool(Sleeve)	For Front	4 ea
	For Rear	4ea
Power Tool	Cross	5 ea (Max)
(Integral + Modular)	Front	5 ea (Max)
	Rear side	3 ea (Max)

## Back machining

Power Tool (modular,cross)	4 ea
Tool sleeve (for ID or OD)	2 ea (add' )
	4 ea (Y2)

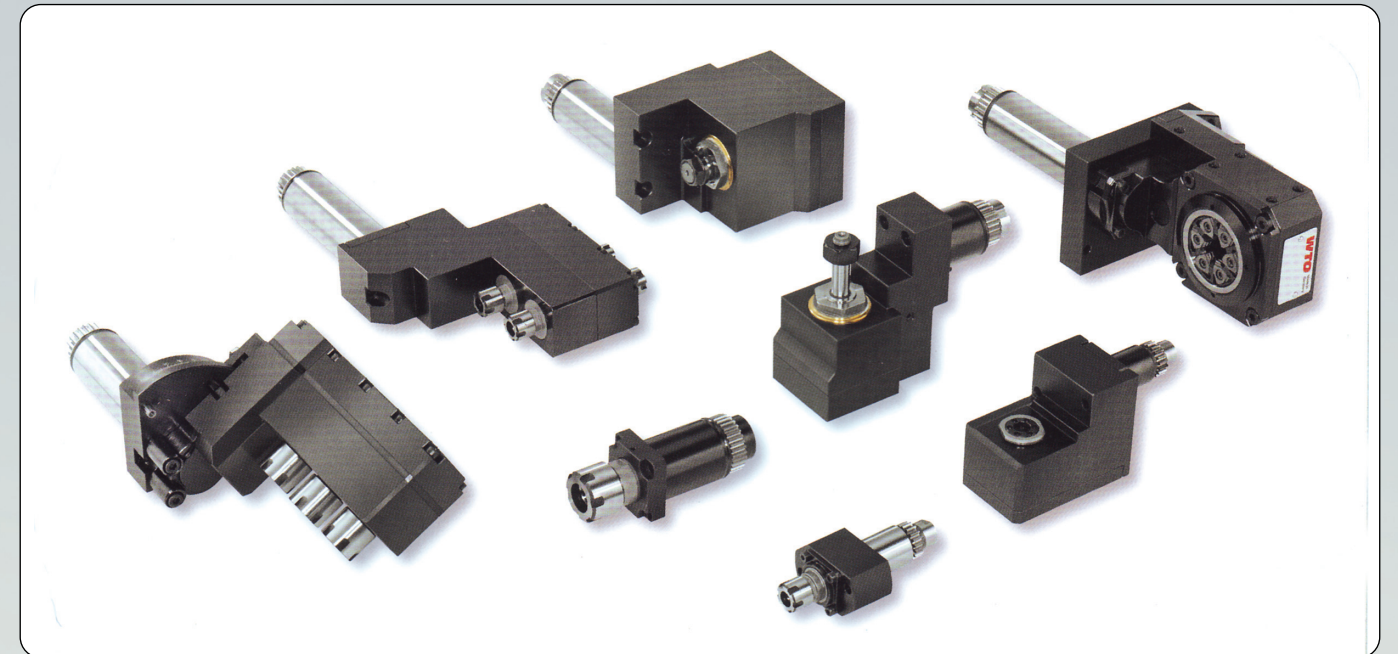


## Complex Machine for Big Dia. Works

- Robust Machine Construction
- High Stiffness Tool Composition and its Slide
- 16 X 16 Size Tool Tip Holder
- High Power 5.5/7.5KW Main Spindle Motor

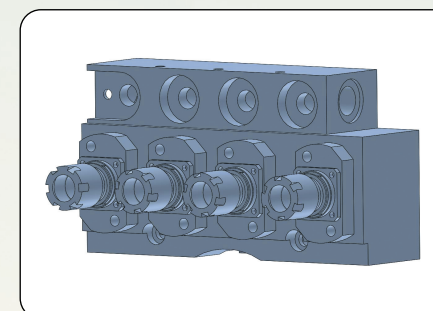
## Optimized Power Tool and Modular Tool

- Maximum Numbers of Power Tool & Special Tool
- Versatile & Variable Power Tool system
- Special Tool Applicable Modular System

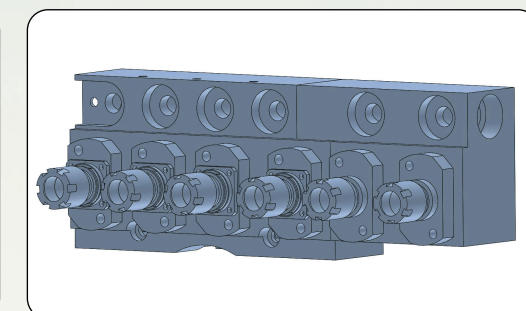


## Variable Versatile Rear Machining System

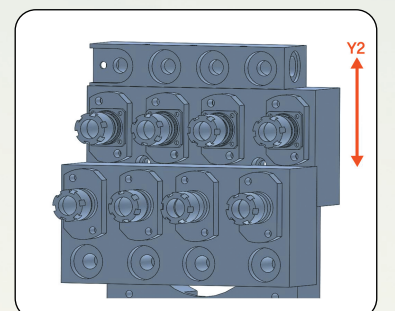
- 4 Rotation Tool
- Modular Tool Applicable whole 4 position
- Cross Drill Applicable with modular tool (OPT)
- Add 2 tool sleeve for ID or OD tool.
- Add 4 tool sleeve for ID or OD tool (with Y2 axis)



· Standard ·



· Add two sleeve holder ·



· Y2 Axis with 4 sleeve holder ·