

Specification		Unit	Model		Remark
Item	Details		MS20	MS26	
● Capability	Max Machin'g Dia	mm	20	26	W/rotary guide
	Max Stroke	mm	260	260	
● OD tools	No. of tools	ea	6	6	
	Tool shank	mm	12 x 12	12 x 12	
● ID Tools (Sleeve holder) (rear machinable)	No. of tools	ea	5	5	
	Max Drilling Capability	mm	∅ 10	∅ 10	
	Max Tapping Capability		M8	M8	
● Power Driven Tool	No. of tools	ea	5~10 (incl OPT)	5~10 (incl OPT)	
	Special Tools		Modular	Modular	
	Max Drilling Capability	mm	∅ 8	∅ 8	
	Max Tapping Capability		M6	M6	
	Max Milling Capability	mm	dia 10	dia 10	
	Motor Power	KW	1,2(1,5, 1,75 OPT)	1,2(1,5, 1,75 OPT)	
● Deep hole drill (OPT)	RPM	Max	5000	5000	
	No. of tools		2	2	
	Max drilling dia	mm	∅ 10	∅ 10	
	Max drill depth	mm	100	100	
● Main Spindle	Index Angle		0,001 C-axis	0,001 C-axis	
	RPM	Max	8,000	8,000	
	Motor Power	Kw	2,2 / 3,7	2,2 / 3,7	
● Sub Spindle	Index Angle		0,001 C-axis	0,001 C-axis	
	RPM	Max	8,000	8,000	
	Motor Power	Kw	1,5 / 2,2	1,5 / 2,2	
	Max projection length	mm	125	125	
● Rear working capability	No. of Tools	ea	4 Rotation	4 Rotation	
	Motor Power	Kw	0,5 (0,9 OPT)	0,5 (0,9 OPT)	
	Power tool rotation	RPM	4,000	4,000	
	Special Tools		Modular	Modular	
	Max Drill'g Capability Fixed)	mm	∅ 8	∅ 8	
	Max Drill'g Capability (Rotate)	mm	∅ 6	∅ 6	
	Max Tapp'g Capability (Fixed)		M8	M8	
	Max Tapp'g Capability (Rotate)		M5	M5	
	Y2 axis tool number increase		OPT	OPT	
	CROSS Drill (Modular w/Y2 axis)	ea	2, 4 (OPT)	2, 4 (OPT)	
Add OD&ID tool numbers	ea	2, 4 (OPT)	2, 4 (OPT)		

※ Specification can be for performance improvement

Standard Accessories

1. Main Spindle Chuck sleeve
2. Sub Spindle Chuck sleeve
3. Spindle C-axis control(Main & Sub)
4. Spindle clamp unit(Main & Sub)
5. Rotary Guide Bush Unit
6. 6 station Bite Holder
7. 5 position ID tool sleeve holder
8. 5 Cross drill(Integrated 3 tools + modular 2 tools)
9. 4 tools rear side machining unit
10. Pneumatic Unit
11. Automatic centralized lubrication unit
12. Broken cut off tool detector(Sensor type)
13. Work light
14. Parts conveyor
15. Sub spindle air purge
16. Sub spindle air blower
17. Rotary guide bush air purge
18. Bar feeder interface

Optional Accessories

1. Parts ejector
2. Front long drill unit(two long drill fixed)
3. Additional 2 sleeve holder for OD, ID tool for Sub
4. Additional 4 sleeve holder for OD, ID tool for Sub(Y2 Axis)
5. Modular Special Tool
6. Coolant flow detector
7. Long parts ejector
8. Bar feeder
9. M-code oil blow
10. High pressure coolant
11. Long parts rear side discharge unit
12. Chip conveyor
13. Chip box
14. Stationary guide bush
15. Auto fire extinguisher
16. Special tooling

CNC SWISS TURN MS20 / MS26 High End Complex Tooling Machine



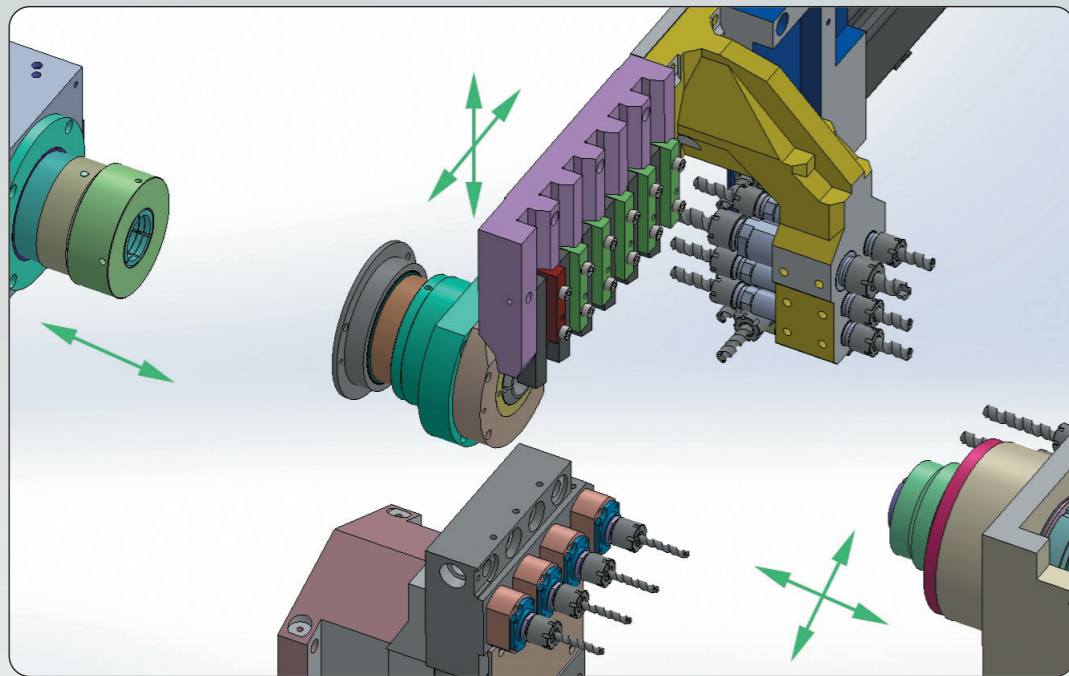
MEPLETE INDUSTRY www.meplete.com

9, Seonggok-ro 146beon-gil, Danwon-gu, Ansan-si, Gyeonggi-do 425-834, Korea
T. 82-2-578-5460, 070-8680-8420 F. 82-2-578-5462 E-mail. sales@meplete.com

MECHANICAL COMPLETE

MS20 / MS26

- High end complex tooling machine
- Various Power Tooling with Modular Tools
- Versatile Rear(Back) Side Machining
- Y2 Axes + increase of Tools + Cross Drill
- Rear End Modular Tooling

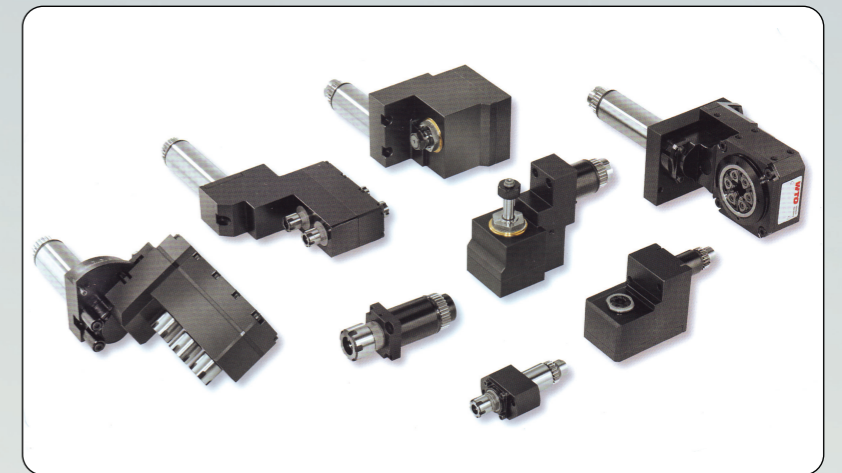


High end & top level machine

- Highest Level Tooling System
- Maximum Numbers of Tools
- Built in Motor Spindle for Main Spindle
- Robust Machine Construction
- High Stiffness Tool Composition and its Slide
- 12X12 Size Tool Tip Holder

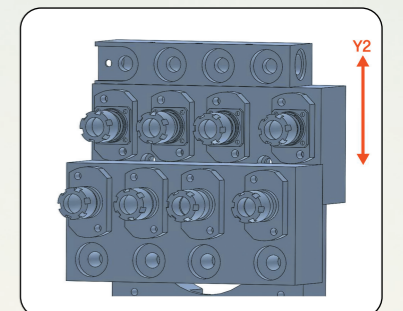
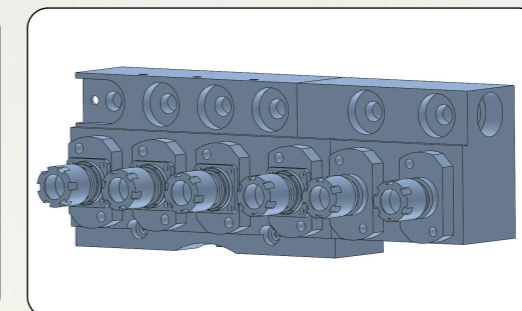
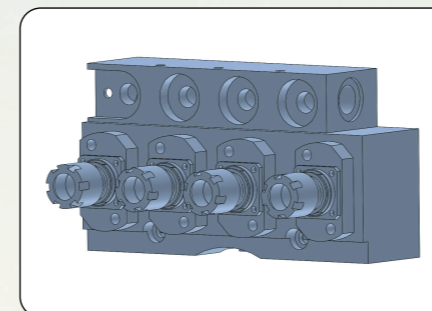
Optimized Rotation Tool and Modular Tool

- Maximum Numbers of Power Tool & Special Tool
- Versatile & Variable Power Tool system
- Special Tool Applicable Modular System



Variable Versatile Rear Machining System

- 4 Rotation Tool
- Modular Tool Applicable on whole 4 position
- Cross Drill Applicable with modular tool (OPT)
- Add 2 tool sleeve for ID or OD tool.
- Add 4 tool sleeve for ID or OD tool (with Y2 axis)



· Standard ·

· Add two sleeve holder ·

· Y2 Axis with 4 sleeve holder ·

Front machining

OD Tool		6ea
ID Tool(Sleeve)	For Front	5ea
	For Rear	5ea
Power Tool	Cross	5ea(Max)
(Integral + Modular)	Front	5ea(Max)
	Rear side	3ea(Max)
Deep hole drill	(Fixed: OPT)	2 ea
	(Rotation: OPT)	

Back machining

Power Tool (modular)	4ea
(cross applicable)	
Tool sleeve (for ID or OD)	2ea (add')
	4ea (Y2)